

PARISH *Profile* — 2017 —



SAINT JOHN
the
DIVINE
EPISCOPAL CHURCH



*Revealing the Love of Jesus
by Embracing our Neighbors
and Serving one another with
Grace and Mercy*

GRACE ABOUNDS

WELCOME

*to St. John the Divine Episcopal Church —
Embracing our neighbors since 1955!*



Whether this is your first visit or you're a "regular," we greet you with open arms. At St. John's we're more than just a congregation, we are family! Not one of the "model families of perfection" you see on "Father Knows Best," but a quirky, gregarious, multi-generational family, like you'd expect in "My Big Fat Greek Wedding."

While we worship and pray alongside two million other Episcopalians in America, and over 85 million Anglican Christians worldwide, we pride ourselves on our eclectic style. At St. John's, we blend the traditional and the modern, the serious and the silly, the organized and the impromptu. Our "potluck philosophy" is that each person is blessed with unique talents and gifts, and everyone has something to contribute.

We don't care if you drive a burnished Bentley or a beat-up Bug, embrace traditional values or practice progressive philosophy, know your Bible verses backwards and forwards or have never cracked the Book. Whatever your faith, ethnicity, sexual preference, political leaning or socio-economic status, there's a place in the pews with your name on it!

We look at Sunday services as a chance to learn more about Biblical principles, refresh our spirits and re-focus our energy, as we prepare to step out into the world and put our faith into practice daily. Our goal is to offer Christ's love in practical ways through service, friendship and empathy to everyone we meet – generously sharing the gifts of our time, talents and treasure.

So, no matter where you come from or how you found us, we look forward to rolling out the welcome mat and inviting you in to share in our worship, hospitality and service to the community, as we grow together in our faith journey.

Want to know more? Visit us on the web at www.stjohncm.org, like our Facebook page or call our friendly parish administrator at **949.548.2237**.

ST. JOHN THE DIVINE PARISH HISTORY, *1955-Present*

YOU MAY HAVE HEARD THAT "HISTORY IS A SET OF LIES AGREED UPON," BUT AT ST. JOHN'S WE LIKE TO TELL IT LIKE IT IS (OR WAS), SO HERE ARE THE HISTORICAL HIGHLIGHTS FOR YOUR EDIFICATION.



The communities of Harper, Fairview, and Paularino had been incorporated only two years as the city of Costa Mesa when St. Margaret's Guild of St. James Episcopal Church, Newport Beach, initiated the first Steering Committee meetings for starting a mission in Costa Mesa. Forty interested people attended the first Steering Committee meeting at St. James in the early spring of 1955. The committee quickly found and recommended the purchase of four and one-half acres of land for the intended mission at the corner of Bay Street and Orange Avenue in Costa Mesa.

The Rev. Robert A. Griesser, a priest retired from the Diocese of Los Angeles, was selected as Priest in Charge. With great speed and determination, the first steps were taken on a building program in early 1956. Architect Frederick Hodgdon was hired to design the building, a dual-purpose parish hall/church with meeting rooms and a kitchen. Construction began almost immediately on the land that had been purchased less than one year earlier.



On July 8, 1956, The Rev. Chandler C. Jackson was appointed vicar of St. John's Mission. Officiating at the dedication of the building on April 9, 1957, was The Rt. Rev. Donald J. Campbell, Suffragan Bishop of Los Angeles. Fr. Jackson conducted services for the first time in the new building on Palm Sunday, April 14, 1957. He remained at St. John's until 1959, when he left to become chaplain at the University of California, Riverside.

The Rev. John W. Donaldson was appointed the new vicar of St. John's. Fr. Donaldson and the mission's members were dedicated to setting and achieving two goals. By 1960, they had added a new wing to the existing building to provide two Sunday School classrooms and church offices. With the additional classrooms, the mission now had a parish hall/church for worship and social use, a kitchen, guild room, two classrooms, and a church office.



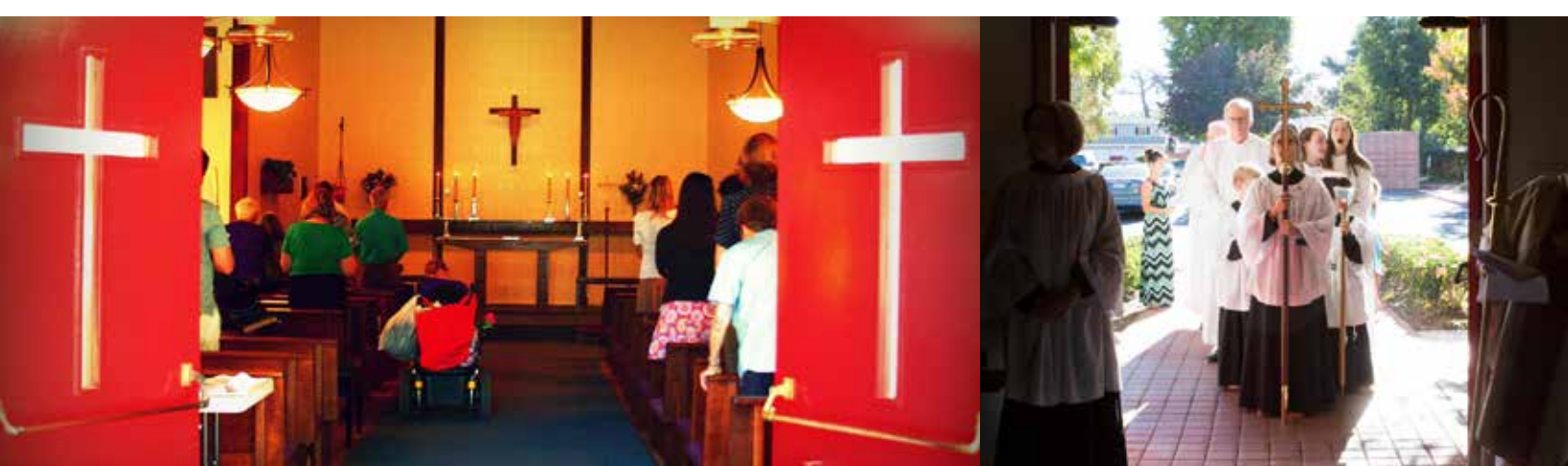
The congregation grew rapidly. By 1962, there was a serious shortage of classroom space. To alleviate the situation, a building fund was established to provide more classrooms. During the sixties, a period of unrest and controversy developed within the church. At St. John's it had an overall dis-unifying effect on the congregation, resulting in a loss of members, a great deal of heartache, and a waste of valuable time spent on needless controversy.

In 1967, a Survey Committee was established at the request of the Bishop's Committee to review the current situation and make recommendations. Two alternatives were considered at that time: either selling the church property and moving to a more favorable location or staying at the present site, selling one acre and then building according to the original plans. It was decided that a portion of the land behind the mission would be sold in 1972, briefly brightening St. John's financial outlook and relieving the past several years' indebtedness, taxes, and assessments.

At the time of the sale of the back property in 1972, the congregation was saddened by the death of Fr. Donaldson, St. John's vicar for 13 years. The Rev. Howard M. "Jack" Cartwright was appointed in October 1972. The following year, St. John's Church could support itself fully for the first time, and the members looked forward to progressing into more substantial programs of community outreach.

The lot next to the mission property at 2031 Orange Ave. went up for sale shortly thereafter. It was decided that the lot, with its six-room house and garage, was a bargain too good to pass up. It was purchased and became known as St. John's House. It was almost immediately put into service to shelter refugees from Southeast Asia coming to the United States after the end of the Vietnam war.

With the introduction of liturgical experimentation, the proposed "new" prayer book, and changing values, St. John's witnessed the exodus of many long-time members, as well as the departure of Fr. Cartwright in 1976. In the absence of a vicar, the members experienced a stormy time in the remaining months of 1976. The congregation chose The Rev. Conrad Nordquist (known as Fr. Con), who was appointed by the bishop in May of 1977 as the mission's fourth vicar. Membership was holding at over 50 families. The facilities of the mission were capable of supporting a congregation of almost twice that size.



Fr. Con began to channel members of the congregation into various avenues of community service. Mission rooms were made available to outside groups. A daycare program was created to provide low-cost child care for working parents. St. John's provided and prepared food for the Southwest Kitchen in Santa Ana four times a year.

By 1980, the critical need for emergency and temporary housing was becoming apparent. The Orange Coast Interfaith Shelter began sheltering homeless families. With the approval of the congregation, St. John's House was used for this purpose.

In addition to providing temporary and emergency housing needs, the lack of housing for senior citizens on limited incomes was a growing concern in Orange County by the late seventies. Fr. Con proposed a ministry to provide housing for low-income, aging members of our community. At the Annual Meeting of 1980, the congregation enthusiastically endorsed this proposal. In 1981, a \$1.5 million grant was secured from the U.S. Department of Housing and Urban Development. St. John the Divine Episcopal Church Development Corporation (St. John's Manor) was formed to sponsor the project and a professional consultant was retained to oversee design and construction. St. John's Manor, as it is known today, was completed in the late summer of 1984.



Although the Manor was a success in terms of its original intent to provide housing to needy seniors, the membership numbers at St. John's continued to struggle. Membership remained stable throughout the 1990's until Fr. Con retired in 2000. Once again, the diocese chose a Priest in Charge for St. John's, this time The Rev. Dr. Barbara Stewart. The story is told that when Bishop Bruno presented her to the congregation, a small gasp was heard in the crowded sanctuary. A woman priest had come to St. John's.

Mo. Barbara began bridging relationships with our neighbors in St. John's Manor. With her passion and dedication, she built this ministry up to include monthly gatherings. Tea and Company was not only a social hour but included informational presentations and fun activities, including everything from CPR training to BINGO. Through this ministry, Friday With Friends began. Manor residents and parish members cooked and shared meals together monthly.

Under Mo. Barbara's guidance, we were blessed with Deacon Sue Beck who created an outlet for parishioners to give back to halfway houses and shelters throughout the Southland. Towels, socks, stuffed animals and cookbooks came pouring in. We became known as "St. John's, that BIG church in Costa Mesa."

Revitalization and improvements within our campus also began. The sanctuary interior, classrooms and playground were spruced up. The parking lot and bathrooms were renovated. We had fun, too! We earned a reputation for throwing outstanding potluck fundraising dinners with themes celebrating St. Patrick's Day, Cinco de Mayo and Halloween, among others. As a long-time parishioner said, "If you aren't involved, we'll get you involved!" When Mo. Barbara announced her retirement in June 2012, we were all saddened but quickly picked ourselves up and began to plan the best retirement party on this side of the Santa Ana River basin! In August of 2012, Bishop Bruno selected The Rev. Philip DeVaul as our next Priest in Charge.

Fr. Phil began his tenure in September 2012. During his probational year, his status was changed to Priest in Charge with Special Circumstances. By September 2013, Fr. Phil became our permanent Rector. Our new millennial rector brought fresh new homilies which attracted many young families and parishioners.



Fr. Phil's focus switched from serving the Southland to concentrating on ministries within the City of Costa Mesa. Fr. Phil became connected to various faith-related groups located in Costa Mesa, such as TRELIS and Share Our Selves. Fr. Phil's dream was to somehow connect our neighbors to our church community.

This passion led to our plan to host a local farmer's market on our campus. Although this project was eventually overturned by the City Council, St. John's continued to connect to our city. Laundry Love Costa Mesa was formed to serve the poor, working poor and homeless individuals in our city. Fr. Phil became a weekly contributor to the Orange County Register, writing articles which married his personal experiences and his love of music with his love of God. As a result, Fr. Phil attracted readers who wanted to learn more everything from Deuteronomy to Dylan!

During his tenure, Fr. Phil transitioned some volunteer staff to paid positions, and in 2014, we experienced the retirement of two long-term employees. Although our former Parish Administrator and Music Minister have retired from their positions, they remain as parishioners and worship in our community. Our current staff members have continued their work of serving the parish community, while adding their own personal styles to operations and worship.

Fr. Phil also proposed many new ideas for worship style, community connectivity and parish life. Some ideas flourished, some failed and some continue to grow. Fr. Phil supported many of our established ministries and introduced new ministries which are still active today. To this day, we serve our community with three Sunday Services and a Wednesday Morning Healing Service. On Sunday mornings, our services are at 8am and 10am. An innovative evening service was introduced on Easter 2016, to provide an alternative to our traditional worship style.

Fr. Phil resigned as Rector of St. John the Divine in September 2016. Although Fr. Phil has physically left St. John the Divine, grace abounds as his and our hopes and dreams of moving forward into our next 60 years remain.



ST. JOHN THE DIVINE

Demographic Survey

SO, WHO ARE THE PEOPLE OF ST. JOHN'S? A BRIEF SURVEY OF PARISHIONERS WAS CONDUCTED IN JANUARY 2017. 93 PEOPLE RESPONDED (APPROX. 85% OF THE CONGREGATION), AND HERE IS A SUMMARY OF THE RESULTS FOLLOWED BY A VISUAL PRESENTATION.



GENDER OF PARISHIONERS: Approximately one-third of the members are male and two-thirds are female.

AGE RANGE OF PARISHIONERS: 70% of members are 41 and over. 30% are 40 and under.

ETHNIC DIVERSITY: We did not ask people to identify in the survey; however, our congregation is mainly Caucasian with some Hispanic, African-American and Asian members, along with a sprinkling of other cultural identities.

HOME TOWNS: 53% of members live in Costa Mesa, and 19% call neighboring Newport Beach home. There is a sprinkling of folks from other cities in Orange County, the most prominent being Irvine and Huntington Beach.

YEARS OF ATTENDANCE: Only 10% of the members have been attending for a year or less, 31% fall into the 1-5 years of attendance range, and 19% have attended for 6-10 years. However, 25% identified themselves in the 11-19-year category, and 15% have attended for 20 years or more.

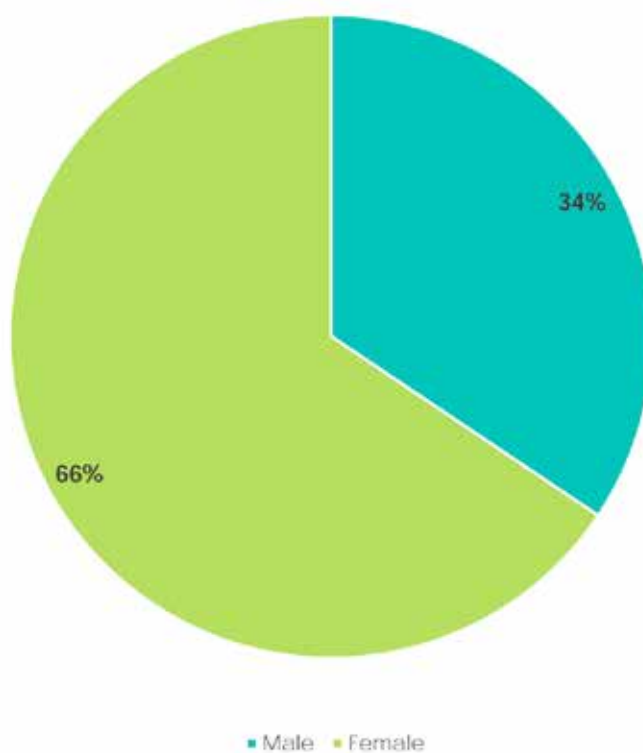
PRIMARY SERVICES: When asked which service they primarily attend, 75% said the 10AM "family service" on Sunday (Rite II). 24% primarily attend the 8AM service on Sunday (Rite I), and 1% claim the newer "alternative-style" 6PM service on Sunday (Rite III) as their primary service.

ATTENDANCE RATES FOR PRIMARY SERVICES: 72% of the congregation attends their primary service weekly. 19% claim attendance every other week, a couple times a month, or only occasionally. 6% attend quarterly, and 2% reported attend monthly.

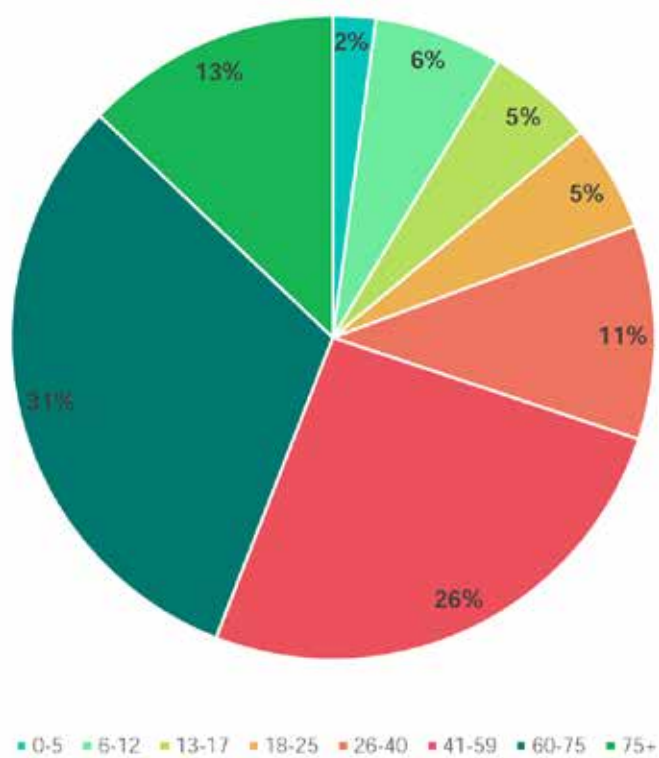
SECONDARY SERVICES: 81% reported not attending a second service during the week. For those that do, 14% said it is the 6PM Sunday service, 4% said it is the 7AM Wednesday service, and only 1% said the 10AM Sunday service.

ATTENDANCE RATES FOR SECONDARY SERVICES: 81% do not attend secondary services. 8% said they attend their secondary service monthly; 9% attend weekly; 3% attend quarterly.

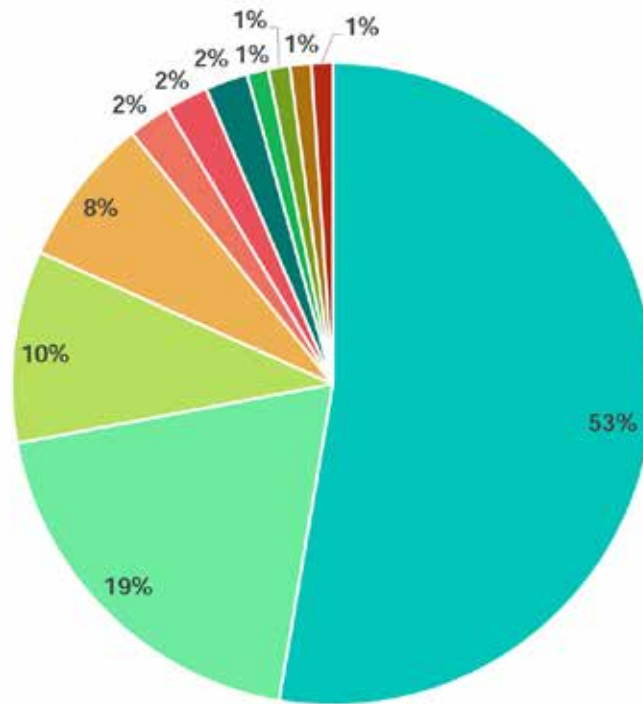
Gender of Parishioners



Age Ranges of Parishioners

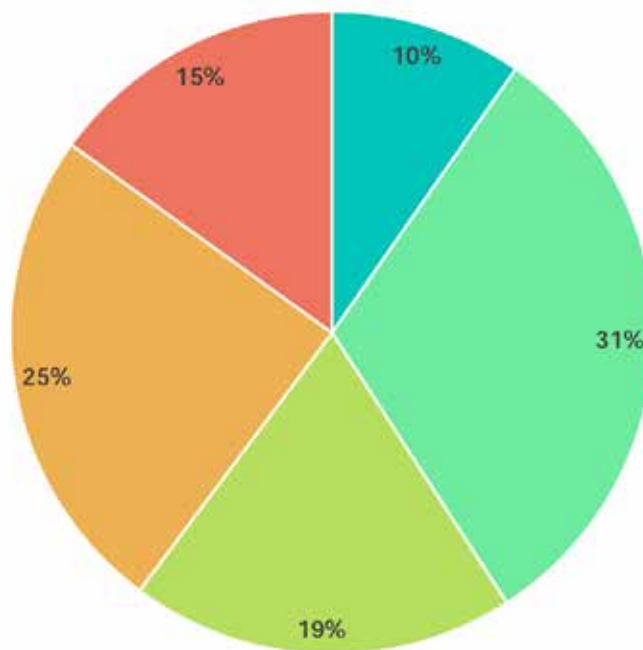


Parishioners' Home Towns



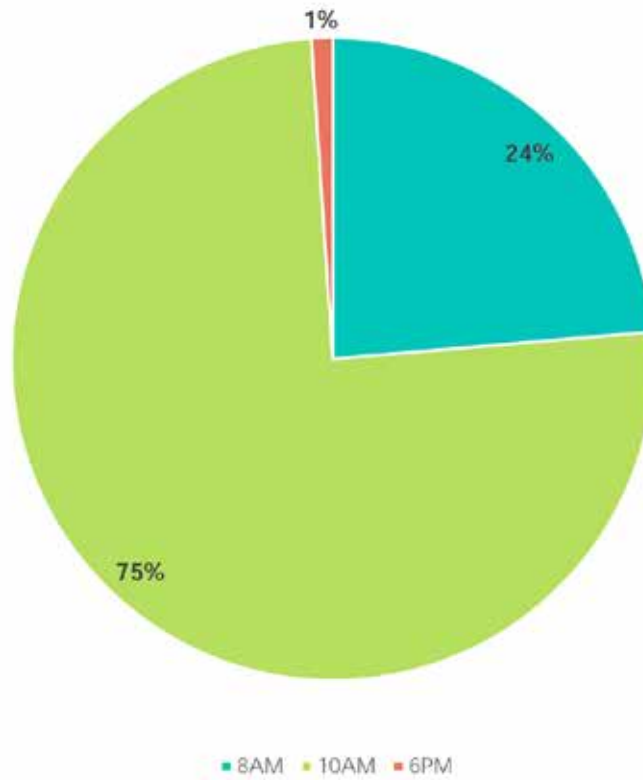
Costa Mesa Newport Bch Irvine HB Lag Niguel Tustin Orange MV San Clem SA FV

Years Attending St. John the Divine

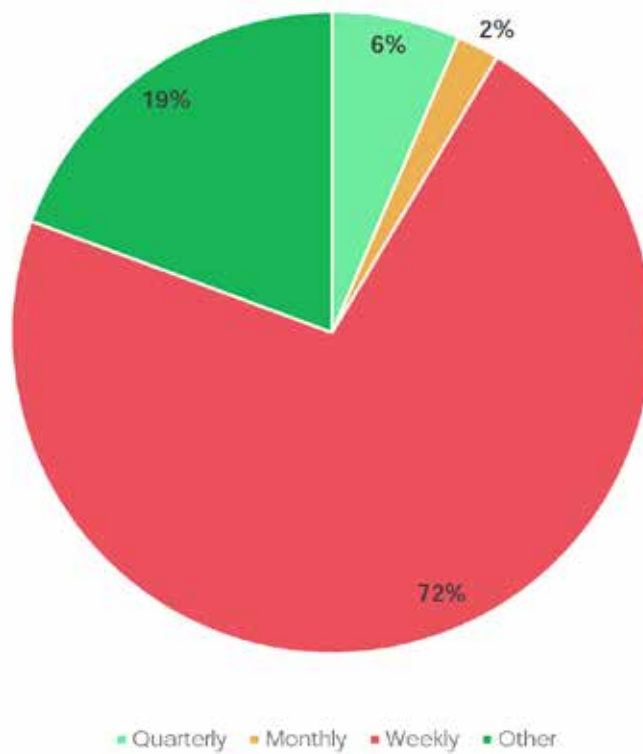


Less than 1 1-5 6-10 11-19 20+

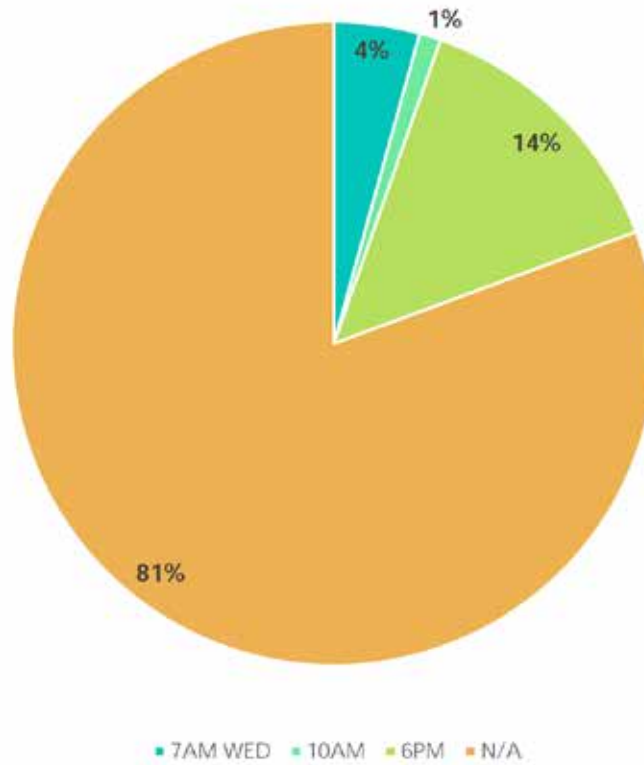
Primary Service Attended



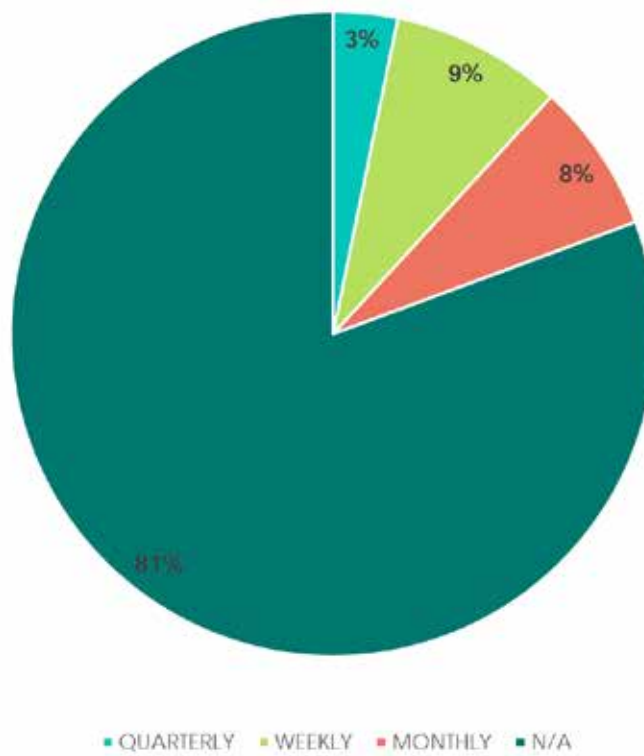
Frequency of Attendance at Primary Service



Secondary Service Attended



Frequency of Secondary Service Attendance



MINISTRIES AT

St. John the Divine

BESIDES OUR SERVICES, WE HAVE A LOT GOING ON FOR A SMALL CHURCH! IF YOU WANT TO KNOW WHAT'S HAPPENING AT ST. JOHN'S, CHECK OUT OUR MINISTRIES AS DESCRIBED BY THE LEADERS IN THEIR OWN WORDS.



"We want children to hear the stories of the Bible, the church, the saints – and in all of that show God's relationship with God's people. We want them to be able to express in their own way that feeling of 'coming close to God' in their lives." – **Susan Dow, Children's Ministries**

"Acolytes serve at the Sunday morning worship services held in the church sanctuary. Their function is to assist in worship. They light the candles, hold the Gospel, and assist with communion." – **Susan Dow, Acolytes**



"Lay Eucharistic Ministers serve at the priest's will, typically during Eucharist. The leader is the Priest. There are several adults and youth members trained as LEMs." – **Jane Hyde, Lay Eucharistic Ministers**



"IWC is an ongoing program devoted to engaging prospective and current members in opportunities to fulfill our mission. We want St. John's membership to grow and we want to make it easy for our members to contribute." – **Betsy Densmore, Invite, Welcome, Connect**

Note: Ushering is now part of Invite, Welcome, Connect.



“The plant sale always benefits an outreach effort. It’s not actually a sale; we don’t sell; people don’t buy. People select plants and make a suggested donation. It was at first a one-time effort. But a parishioner asked me about the next sale, and I thought—well, we can do it every year, and we have, with a couple of exceptions.” — **Ann Van Sant, Plant Sale**

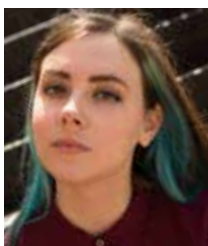


“Every woman in the parish is automatically a member of the ECW. Activities for our ECW often take place with a “ladies night out” dinner at a local restaurant, and we also try to host at least one fundraising dinner per year.” — **Sharon Boles, Episcopal Church Women**



“We are the Creators of Stuffed Animals (C-O-S-As). We began so we could make simple stuffed animals for children under the age of 5 who were with their mothers in a residential drug rehab facility. The purpose of our group is to provide a loving gift for someone in need.” — **Emmy Lou Swanson, Las Cosas**

“Our mission is to prepare the sanctuary for worship and maintain the items necessary for worship at the altar. This group has been together for 5-6 years now. We have become extremely close and we are very supportive of one another. This level of closeness is seldom attained anywhere else. We stay positive and we keep focused on our mission of preparing for worship.” — **Emmy Lou Swanson, Altar Guild**



“For the 10:00AM service, we have several members of the choir who help out leading the congregation in singing. While the choir is small and meets informally, we have five members who come when they are available, and their singing adds so much to the service.” — **Jerika Hayes, Music Director**



"Girls' Friendly Society provides fellowship for girls in a safe and accepting environment where Christ's love is evident. Our mission is to provide a happy place for girls at church and to give them a role at church. They have annual responsibilities such as Souper Bowl Sunday, St. Francis Day and Operation Shoebox which are run by GFS. I hope this gives them a sense of ownership and responsibility for their parish." – **Margaret Nolde, Girls' Friendly Society**



"I take the cans to the Someone Care Soup Kitchen when we have a large enough load – usually once per month."
– **Cindy Stieger, Collections for Someone Cares Soup Kitchen**



"The mission of LLCM is to wash clothes for whoever shows up from 7-9pm the third Tuesday of each month. Most of the clients are "working poor" Hispanic families in town, but there are also homeless people from Costa Mesa. People show up, clients put in their clothes and detergent, volunteers put in quarters. We try to finish by 9pm. Crazy simple and amazingly beautiful, a little like church in a laundromat." – **Rock Hunter, Laundry Love**



"The Order of the Daughters of the King® (DOK) is a spiritual sisterhood of women dedicated to a life of Prayer, Service and Evangelism. We have made a commitment to Jesus as our Savior, and we follow Him as Lord of our lives. The DOK of St. John the Divine are committed to serving Christ in His community here on earth. This includes the church community, city of Costa Mesa, county of Orange, and all around the world as we pray and serve gladly." – **Anastasia Winley, Daughters of the King (Julian of Norwich Chapter)**



"Our vestry team is dedicated to making St. John the Divine the best church in town! We listen to our congregation and make every effort to address their needs and concerns. We are excited to lead the search process for a new rector and look forward to a bright future!" – **Nina Marshall, Senior Warden**

ST. JOHN THE DIVINE FINANCIAL PROFILE

By: Brian Summerfield, Treasurer



St John's financial profile is an executive report listing current characteristics and notes, with the cash balance sheet, and 2017 budget attached as reference. We had a special financial transaction in 2016. A non-profit corporation started by the parish many years ago was dissolved and all its assets transferred to St John's as unrestricted funds. A letter from the non-profit Development Corporation is included as reference. This section was prepared by the current Treasurer, Brian Summerfield

- Strong cash position since transfer of development funds
- Negative operating cash flow for many years
- Land where church is located is not owned by the parish, and therefore is not shown on our balance sheet as an asset. It is owned by the Corp Sole of the Dioceses of Los Angeles
- Church and office building and improvements are owned by the parish but have no market value
- Non-cash assets have no market value
- No long-term debt
- Short term debts are paid in full every month
- Open to discussing a co-equity agreement for clergy housing

ST. JOHN'S CASH BALANCE SHEET

12/31/2016

PACIFIC PREMIER BANK

Money Market Savings	\$1,410,318.97
Checking	\$42,178.65
Rector's Discretionary Checking	\$117.50

INFINEX BROKERAGE (FORMERLY) ENSI

Brokerage Account	\$18,774.40
-------------------	-------------

TOTAL CASH AND SECURITIES

\$1,471,389.52

DEVELOPMENT CORPORATION LETTER

*By: Ken Lord, President of the St John Episcopal Church
Development Corporation*

During 2016, the St John Episcopal Church Development Corporation Board of Directors ("The Manor Board") completed legally dissolving the Corporation through the legal firm of Brown & Streza LLP. All funds from the Development Corporation were transferred to the Church under the authority of the Vestry on November 11, 2016. Final dissolution documents were filed with the Attorney General's Registry of Charitable Trusts on November 28, 2016. Acknowledgement of the filing has not been secured as of this report. Final state and federal tax documents will be filed by Brown & Streza LLP in early 2017.

I want to thank the Development Corporation Board of Directors for their service during this period. It has been a pleasure to work with Marcie Scott, Chery Hyon, Jeff Tully and Father Philip DeVaul throughout this process. The Development Corporation has served the local community well and we all look forward to the Vestry continuing to support the community through the administration of the funds.

ST. JOHN THE DIVINE

BUDGET 2017

INCOME

	2017 Budget
Income	
Open Plate	\$7,000
Tithe Sunday	\$5,000
Pledges	\$120,000
Holiday offerings	\$650
Miscellaneous	\$500
Income from groups	\$5,500
Income from savings (Deficit)	\$86,988
TOTAL INCOME	\$225,638

EXPENSES

Clergy Income	\$58,195
Clergy Support	\$24,479
Staff	\$73,994
Administration	\$15,750
Parish Life	\$3,875
Building & Operations	\$24,070
Outreach	\$25,276
TOTAL EXPENSES	\$225,638

TOTALS

TOTAL INCOME	\$225,638
TOTAL EXPENSES	\$225,638
YEARLY BALANCE	\$0

ST. JOHN THE DIVINE PLEDGE REPORT

2017

We have 39 pledging units who have pledged a total of \$129,360 for 2017. This is an increase of \$5,640 compared to 2016 pledges. For more information on past participation and giving trends, go to http://pr.dfms.org/study/exports/7421-3000_20170407_08163418.pdf

60th Anniversary
Celebration
November 2015



HOPES AND DREAMS

*of St. John the Divine
Episcopal Church*

WHERE DO WE GO FROM HERE? WE ASKED OUR CONGREGATION FOR THEIR HOPES AND DREAMS AS WE MOVE FORWARD TOGETHER AS A COMMUNITY OF FAITH. HERE'S A SUMMARY OF WHAT THEY SAID.



CONGREGATION:

BECOMING MORE MATURE CHRISTIANS

We want to be fed and challenged to grow in our understanding of what it means to be a Christian and an Episcopalian in the 21st Century and in Costa Mesa. We want to have opportunities to be taught, to listen and to discuss, not only the meaning of Scripture but, most importantly, its application to our lives and our outreach into our community and nation. We do not wish to hide our heads in the sand or choose sides in political debates, but to seek and affirm the place of dialog, dignity and discernment in our society. We want our community to be known for both its hospitality and its Christian faith and character.

DEMOGRAPHICS

Down the road, we'd love to have 120 people attending each Sunday. We would like to see more age and ethnic diversity, especially families with children, as well as more young adults. Most parishioners would like us to grow yet keep our "family feel." We want our congregation to be intimate, vibrant and dynamic.

SUSTAINABILITY

Parishioners are concerned with our financial well-being. A major goal is to move towards a solid financial future, with resources available to maintain and improve our facility, pay staff fair wages and offer more programming. We are open to exploring options for growth including making connections and sharing resources with other churches in the area, both Episcopal parishes or other denominations. We want to maintain unity with the Diocese of Los Angeles. Growing the evening service is important so we can offer a sustainable option for those who prefer an alternative form of worship.



LEADERSHIP:

While we want to have a dynamic and interesting priest, we want people to come for the spirit of our community, not just the priest's personality. We are looking for a leader that inspires us through his or her good example and wants to walk with us on our journey, not just tell us what to do and how to do it. We would like someone who reaches out to the community but also focuses on the congregation and can provide strong pastoral care.

OUTREACH:

LOCAL COMMUNITY LEVEL

St. John the Divine is a small church with a big heart! We want to be known as a powerful force for good in Costa Mesa. How do we achieve this? We hope to enlarge our capacity for community service by upgrading our facilities, becoming involved in city outreach and joining with other churches in the surrounding community to host events benefitting folks in the area.

GLOBAL LEVEL

Parishioners expressed an interest in being evangelical – while we may not be “turn or burn,” we want to excel at effectively sharing our faith through words and (most importantly) actions. There is a specific interest in reaching out to Christian refugees around the world.



RECTOR QUALITIES: ARE WE A MATCH?

WHAT MAKES THE IDEAL SHEPHERD? WHO BETTER TO ASK THAN THE FLOCK? HERE ARE THE TOP QUALITIES WE WOULD LIKE IN OUR NEXT RECTOR, IN ORDER OF IMPORTANCE.



PREACHING: Dynamic preacher with strong Biblical and Episcopal grounding; good teacher; someone who will help us increase our faith and push us to apply it to everyday life, though we prefer to keep politics on the sidelines

PASTORAL: Friendly, welcoming and sensitive to people's needs; good at interacting with multiple generations; available for face-to-face interaction with the congregation

WELCOMING: Welcomes all types of folks to the church; open to different points of view; interested in social activities with the congregation; wants to be involved in outreach with other houses of worship, the community and the world

INNOVATIVE: Open to trying new things – worship styles, music, programs, etc., creative ideas for growing the church (especially attracting younger members/youth); someone who doesn't mind shaking things up, but also respects tradition



LEADERSHIP: Servant leadership; wants to walk with the congregation, not tell us what to do; organized with financial and business savvy; interested in the day-to-day operation of the church, as well as being in touch with events in the Diocese and the world

COLLEGIAL: We recognize that while we want all these characteristics, the person who comes will likely not be equally strong in all areas. Therefore, we would like the Rector to be humble and self-confident enough to ask for help in the areas where he or she needs assistance and to be able to receive that help graciously. The parish has many talented and experienced people who can complement the Rector in a wide range of areas, from administration to theological education!

60th Anniversary
Celebration
November 2015



DESTINATION

Costa Mesa, City of the Arts

Welcome to the North American Riviera! Seriously! You won't find many places on the planet with nicer people, amenities or weather, and we're blessed to call this place our home! We could go on for pages talking about our fair city, but you can find out everything you need to know by visiting www.costamesaca.gov. For even more information on the demographics of our area, go to <http://pr.dfms.org/study/StaticPDFs/7/7421-3000.pdf>.

YES, WE'RE FAMILY-FRIENDLY!



Got kids? No worries! There are numerous local pre-schools, including Montessori, as well as private schools like Waldorf School of Orange County and religious schools throughout the city. Public school your thing? Costa Mesa is part of the Newport-Mesa Unified School District, one of the best in the state. Learn more at www.nmusd.us. We are also home to Orange Coast College – one of California's top community colleges – and a member of the Coastline Community College District. Vanguard University, a private, Christian 4-year institution, the Art Institute of California, Orange County and Whittier Law School are all located here. We are also driving distance from three top-notch state universities -- UC Irvine, Cal State Fullerton and Cal State Long Beach.



Our city offers numerous family-oriented opportunities like the Orange County Fair, Concerts in the Park and WinterFest, to name a few. Costa Mesa offers innovative shopping, arts and restaurants such as the SoCal Collections, The Camp, The Lab, Dax Studios, The Triangle, Eat Chow, Arc and Sidecar Donuts – just about any cuisine you can name is available for serious foodies. And, don't forget our proximity to major entertainment venues like South Coast Plaza, Segerstrom Center for the Arts, Discovery Science Center, Balboa Island Fun Zone, Disneyland, Knott's Berry Farm, Angel Stadium, Pageant of the Masters, Mission San Juan Capistrano, Santa Ana Zoo and much more throughout the Southland!

As for recreation, we've got it all! Costa Mesa is home to numerous sports teams and facilities, as well as venues for all sorts of hobbies and activities, including the Chargers training facility, the OC Fair and Event Center and Volcom Skate Park. We have extensive offerings for all ages through our city's Parks & Rec Department, and more mature folks can check out our Senior Center for even more social and educational activities and services. Not to mention our proximity to some of the finest beachfront in the country. Pet lovers can join in the fun too at our city's Bark Park for dogs of all ages and sizes.

Need to get out of town? No problem! Costa Mesa is just 10 short minutes from John Wayne Airport (SNA), and you've got easy access to the 405, 55 and 73 freeways, as well as the scenic Pacific Coast Highway. OCTA runs regular bus service, and train stations are in nearby cities. Ideally located in the central coastal region of Orange County, Costa Mesa is minutes from the beach and just an hour or two away from local mountains, desert resorts and major metropolitan centers such as Los Angeles and San Diego.

DIOCESE OF LOS ANGELES

YES, WHAT YOU SAW ON THE SILVER SCREEN IN “LA, LA LAND” IS PROBABLY A GOOD REPRESENTATION OF THE CITY OF ANGELS, BUT THE DIOCESE OF LOS ANGELES IS MUCH BIGGER THAN THAT! IT COVERS A GEOGRAPHIC AREA FROM THE DESERT TO THE OCEAN, TAKING IN THE SAN FERNANDO VALLEY, LOS ANGELES (INCLUDING HOLLYWOOD), THE INLAND EMPIRE, AND OUR VERY OWN ORANGE COUNTY. IN FACT, YOU’D BE HARD PRESSED TO FIND AN AREA SO DIVERSE IN LANGUAGE, CULTURE, CUISINE OR TERRAIN. TO LEARN MORE, JUST CLICK ON WWW.LADIOCESE.ORG.

**CHECK OUT OUR NEIGHBORING EPISCOPAL CHURCHES!
WE ARE PART OF THE DEANERY 10 FAMILY.**

DEANERY 10

SOUTH/COASTAL ORANGE COUNTY

The Very Rev. Canon Peter Haynes, dean

Ms. Cindy Louter, president

CONGREGATIONS:

- Corona del Mar, St. Michael & All Angels Church
- **COSTA MESA, ST. JOHN THE DIVINE**
- Huntington Beach, St. Wilfrid of York Church
- Irvine, St. Andrew’s Church
- Laguna Beach, St. Mary’s Church
- Laguna Hills, St. George’s Church
- Laguna Niguel, Faith Church
- Rancho Santa Margarita, St. John Chrysostom Church
- San Clemente, St. Clement’s Church
- San Juan Capistrano, St. Margaret of Scotland Church
- Seal Beach, St. Theodore’s Church

